

BACK-END

MOS-FET

IGBT

CAPACITY TEST SYSTEM 容量測定器

CPS2000 2000V

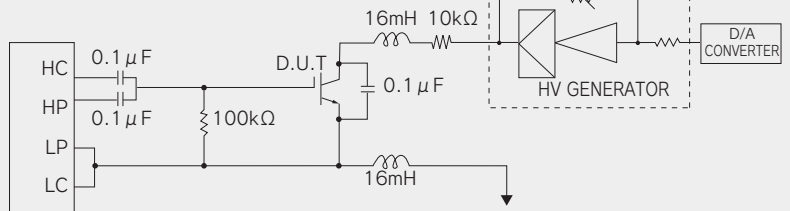
NEW



- CPS2000 has 2000V forcing voltage which is the highest voltage value in capacity measurement systems (CPS series). Control part and measurement part are separated in this system.

- 本システムは容量測定器（CPSシリーズ）で最大となる印加電圧2000Vを持っています。コントロール部と測定部が分かれた構成です。

Ciss Measurement Circuit



MODEL

CPS2000

MEASURABLE ITEMS

MOS-FET, IGBT : Ciss, Coss(GD), Coss, Crss
 : Cgc=Crss
 : Cge=Ciss-Crss
 : Cce=Coss-(Cgc×Cge)/(Cgc+Cge)

TEST PLAN / SORT PLAN

1000/100

VCE

+00.1V~+99.9V(+0.1V STEP)
 +001V~+999V(+1V STEP)
 +0.01kV~+2.00kV(+0.01kV STEP)
 -01.0V~-99.9V(-0.1V STEP)
 -001V~-999V(-1V STEP)

LOWER GATE/UPPER GATE

000.0pF~9.999nF

CAPACITANCE MEASUREMENT

100pF~9.999nF(1MHz)

MEASUREMENT TIME

10ms~999ms

DIMENSIONS & WEIGHT

MAIN UNIT

430(W)×700(D)×245(H)…33kg

HEAD BOX

445(W)×500(D)×410(H)…20kg